



Experience the Difference
Innovation ■ Quality ■ Service



Channel Letters ■ Sign Cabinets ■ Halo Lit Letters
Border or Accent Tubing ■ Cove Lighting ■ Decorative Signage

52 Years of Lighting Excellence

The SloanLED Company was founded in 1957 to design and develop high-reliability lighting products. By the early 1970s, SloanLED had become a pioneer in Light Emitting Diode (LED) technology. The founder, Charles Sloan, was driven by two simple principles: employ the latest technologies to develop quality lighting products and take really good care of the customers. Today, more than 50 years later, SloanLED continues to deliver on those principles.

The company is a leader in the development and application of LEDs, serving many commercial, industrial and high-tech industries. The sign industry has responded well to SloanLED, providing the company with its largest and fastest growing business segment. By combining its over 50 years of lighting experience with ISO 9001 quality recognition, strong warranties, superior technical assistance and unparalleled customer service, SloanLED is dedicated to providing the sign industry with the best LEDs, the best support and the best results.



Leaders in LED Technology

SloanLED brought its LED expertise to the sign industry in the mid 1990s, and launched the first large-scale national LED signage program in 1997. SloanLED has established itself as the preeminent brand of LED lighting products in the sign market.

Committed to providing the sign trade with the highest quality LEDs, the broadest selection of products and the very best customer support, we offer LED solutions for nearly every application. From the smallest halo-lit letters, to the biggest face-lit channel letters. From the largest global border tubing programs, to the most unusual one-time accent tubing job. From the most demanding environments, to the most challenging installations. SloanLED has the innovation, experience and selection needed to make your LED signage projects successful.

Channel Letters and Sign Cabinets

Easy-to-use sign LED lighting systems are now brighter and more versatile than ever before.



Product	Key Attributes	Applications
ChanneLED 5	Wide viewing angles - wider coverage per stroke Only 2 modules per foot / 6.5 modules per meter SloanStretch - gives you the flexibility of additional wire for optimum module placement and brightness, minimizing the need to jump or splice	<ul style="list-style-type: none"> • Medium/large face lit or halo lit signs • Digital/vinyl graphics • Cove lighting
V Series	Wide viewing angle - wider coverage per stroke Versatile low profile design 8 vivid colors	<ul style="list-style-type: none"> • Shallow, small, narrow face or halo lit signs • Color face lit signs in all sizes
ChanneLED 4	Classic design, great value	<ul style="list-style-type: none"> • 5in/127mm can depth face lit signs
Great White 3	Wide viewing angles - wider coverage per stroke Snap and Stretch - create two functional modules for optimum module placement and brightness	<ul style="list-style-type: none"> • Bright white face lit signs • Wide, deep, tall face lit signs • Hard to illuminate vinyl and faces • Large halo lit signs
ThinLED	Flexible strips, extremely small/narrow	<ul style="list-style-type: none"> • Small halo letters, edge-lit signs

LED Tubing

Create neon like looks with an eco-friendly LED-based tubing, available in an array of colors.



Product	Key Attributes	Applications
ColorLINE	Neon inspired look, high brightness, easy to cut in the field, low power consumption	<ul style="list-style-type: none"> • Small profile border, perimeter lighting • Accent display, exhibit lighting
FlexiBRITE	Flexible tubing, pre-assembled/sealed, in the field without heating	<ul style="list-style-type: none"> • Free-form shapes, logos, small border lighting • Open face channel letters
LEDStripe	Ultra-bright large profile tubing, high impact rigid tubing, day-time color when non illuminated	<ul style="list-style-type: none"> • Large profile border, perimeter, accent lighting

ChanneLED 5 - Brilliantly simple, creating the new standard

Medium to Large face lit and halo signs

Now with brighter LEDs and wider viewing angles, CL5 offers simplicity and flexibility while providing bright, vivid and uniform illumination for face-lit channel letters, sign cabinets, cove lighting and an endless array of low-voltage applications.

- Brighter LEDs
- Wider viewing angles
- SloanStretch - extendable wire (+2in/+50mm) feature for optimum module placement
- Constant Current Technology
- Pre-wired modules for optimal placement
- UL, cUL recognized, CE, CSA Certified
- RoHs and WEEE compliant



Item Description	Part Number	Power Per Module
CL5 Red	701269-R5-MB	.6 Watts
CL5 White	701269-W5-MB	.9 Watts
CL5 Warm White	701269-WW5-MB	.9 Watts

Uses SloanLED 12 Volt DC Power Supply

SPECIFICATIONS:

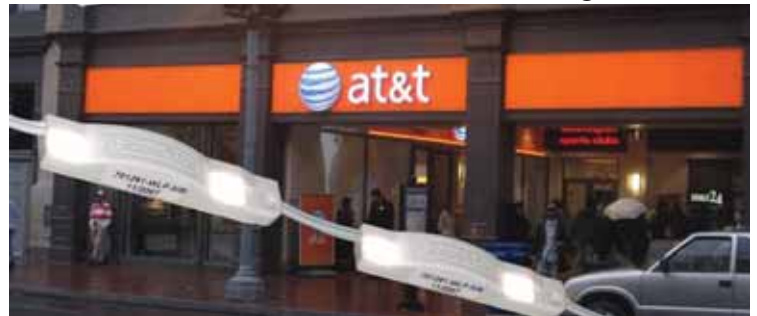
Dimensions L x W x H	Red	4in x 7/16in x 7/16in 102mm x 11mm x 11mm
	Whites	3 3/8in x 7/16in x 7/16in 86mm x 11mm x 11mm
Modules per foot/meter	2 (6.5)	
LEDs per module	Red	3
	Whites	2
Maximum coverage per row	Can depth	Row coverage
	≥5in (≥125mm)	7.5in (150mm)
Fastening	Peel-n-stick and mechanical	
Packaging	25ft (7.5m) per tray, 5 trays per carton	

V Series - Versatility at work and everywhere you look

shallow/small/narrow face lit or halo signs

V Series is the brightest LED in its class – versatile enough for many applications and the perfect solution for shallow channel letters and small halo lit letters.

- 8 vivid colors
- Wide viewing angle
- Low profile modules
- Constant Current Technology
- Pre-wired modules for optimal placement
- UL, cUL recognized, CE, CSA Certified,
- RoHs and WEEE compliant



Item Description	Part Number	Power Per Module
V Series Red	701269-RLP-MB	.6 Watts
V Series Red/Orange	701269-ROLP-MB	.6 Watts
V Series Orange	701269-OLP-MB	.6 Watts
V Series Yellow/Amber	701269-YLP-MB	.6 Watts
V Series Green	701269-GLP-MB	.6 Watts
V Series Blue	701269-BLP-MB	.6 Watts
V Series White	701269-WLP-MB	.6 Watts
V Series Warm White	701269-WWLP-MB	.6 Watts

Uses SloanLED 12 Volt DC Power Supply

SPECIFICATIONS:

Dimensions L x W x H	2 1/4inx 7/16in x 3/8in 57mm x 11mm x 10mm	
Modules per foot/meter	3 (10)	
LEDs per module	2	
Maximum coverage per row	Can depth	Row coverage
	2.25in - 3in (55mm - <75mm)	4in (100mm)
	>3in - 5in (>75mm - 125mm)	5in (125mm)
	>5in - 8in (>125mm - 200mm)	6in (150mm)
Fastening	Peel-n-stick and mechanical	
Packaging	25ft (7.5m) per tray, 5 trays per carton	

Great White 3 - Larger than Life, brightness never looked so good

Great White 3 lighting system is an advanced high output white LED system. It is easy-to-use and provides an even, bright white illumination for wide, deep and tall lettersets and sign cabinets, while using fewer modules. It is also a perfect solution for illuminating signs with dark or digitally printed vinyl applications. Great White 3 lighting system is designed with a proprietary Snap and Stretch module feature; this allows you to create two functional modules for optimum module placement and brightness.

- Advanced High Output White LED System
- Even, bright illumination with fewer modules
- Snap and Stretch modules – create two half modules for optimum placement for maximum brightness
- Constant Current Technology (CCT)
- UL, cUL recognized, CE, CSA Certified
- RoHs and WEEE compliant

Item Description	Part Number	Power Per whole Module
Great White 3	701269-WL3-MB	2.4 Watts

Uses SloanLED 12 Volt DC Power Supply

* Typical placement will be at 1.5 modules per foot (5 per meter), but can be placed closer or further apart for desired brightness



bright white, wide/deep/tall face lit signs



SPECIFICATIONS (whole module):

Dimensions L x W x H 6inx 1in x .5in
152mm x 25mm x 11mm

Modules per foot/meter 1.5 (4.76)

LEDs per module 4

Maximum coverage per row

Can depth	Row coverage
5 - <8in (125 - <200mm)	5in (125mm)
≥8in (≥200mm)	8in (200mm)

Fastening Peel-n-stick and mechanical

Packaging 20 modules per tray,
5 trays per carton

ChanneLED 4 - Classic channel letter performance

ChanneLED 4, an industry classic and an earlier generation product, works well in illuminating face-lit and halo-lit channel letters, sign cabinets and an endless array of low-voltage applications. ChanneLED 4 is an effective alternative at a great value.

- Pre-wired modules spaced for optimal placement
- Constant Current Technology
- UL, cUL recognized, CE, CSA Certified
- RoHs and WEEE compliant

Item Description	Part Number	Power Per Module
White Short	701269-WSB-MB	.48 Watts
Red Long	701269-RL-MB	.6 Watts

Uses SloanLED 12 Volt DC Power Supply

If needed CL4 minis, shorts and longs in other colors can still be ordered. Contact SloanLED for details.



SPECIFICATIONS:

Dimensions L x W x H White Short 2in x 1/2in x 9/16in
51mm x 13mm x 14mm
Red Long 4in x 1/2in x 9/16in
102mm x 13mm x 14mm

Modules per foot/meter White Short 3 (10)
Red Long 2 (7)

LEDs per module White Short 2
Red Long 3

Maximum Coverage per row by

Can depth	Row coverage
5in (125mm)	5in (125mm)

Fastening Peel-n-stick and mechanical

Packaging 25ft (7.5m) per tray,
5 trays per carton



ThinLED - Halo lit LEDs

A favorite solution for narrow halo-lit "reverse-lit" channel letters, edge-lit signs or any indirect lighting application with thin strokes or channels.

- Can be bent to a 1in radius, fits in strokes as narrow as 3/8 inch and can be cut to size
- Strip maintains its shape once bent for easy and secure mounting to the return
- Each strip includes one 6 inch jumper (additional jumpers available)
- Wide viewing angle
- Constant Current Technology
- UL, cUL recognized, CE, Certified



SPECIFICATIONS:

Item Description	Part Number	Cut Increments
Red	701228-18-R	2.0in (50mm)
Amber	701228-18-A	2.0in (50mm)
Yellow	701228-18-Y	2.0in (50mm)
Green	701228-18-G	1.33in (35mm)
Blue	701228-18-B	1.33in (35mm)
White	701228-18-W	1.33in (35mm)

Uses SloanLED 12 Volt DC Power Supply

Strip dimensions	12inL x 3/4inH x 3/8in W 305mm x 19mm x 10mm
LEDs per strip	18
Power per strip	2.2 Watts
Fastening	Peel-n-stick
Packaging	12in (305mm) strips sold individually



LEDStripe - Large profile LED tubing

Add increased awareness to any building with this patented LED-based rigid tubing system from SloanLED. Completely assembled and sealed tubes are ready for installation.

LEDStripe, with its large profile and long runs, has become the border tube system of choice for many retail, restaurant, petroleum and lodging chains.



25mm Profile

- Daytime color when non-illuminated
- High impact acrylic: UV stable, hydrocarbon insensitive, non-fading
- One cut per tube can be made in the field
- Factory bend to an 8in radius
- Convenient, weatherproof connectors between sections
- Operating temperature -40°C to +70°C
- Uses 24 VAC transformer
- Easy to use install video available at www.SloanLED.com
- Convenient corners and joint covers
- Easy to use mounting buttons
- Conforms to UL 48 standard, CE Certified and ETL listed

Item Descrip.	Part # Tube	Actual Length	Approx. Cut Increments
1ft Tube	701189-color-1	12 7/8in (.33m)	1in (25mm)
2ft Tube	701189-color-2	24 7/8in (.63m)	3in (75mm)
4ft Tube	701189-color-4	48 7/8in (1.24m)	3in (75mm)
6ft Tube	701189-color-6	73 3/8in (1.86m)	3in (75mm)
8ft Tube	701189-color-8	97 3/8in (2.47m)	3in (75mm)
10ft Tube	701189-color-10	121 3/8in (3.08m)	3in (75mm)

SPECIFICATIONS:

Power per foot/meter	2.8 (9.2) Watts
Colors	Red, orange, amber (warm) Blue, green, white (cool) Lemon yellow and pastels also available
Power supply	SloanLED 24 Volt AC



ColorLINE - Neon inspired Accents

Add stunning neon-like appeal and increased awareness to any building with this new, patented LED-based rigid tubing system. Completely assembled and sealed tubes are ready for installation. ColorLINE offers our brightest light output, a neon-like profile and innovative lit, mitered corners.



11mm profile

- Brighter neon-like accents similar to 11mm neon glass
- High impact acrylic: UV stable, hydrocarbon insensitive, non-fading
- Factory bent to an 8in minimum radius
- Convenient, weatherproof connectors between sections
- Operating temperature -40°C to $+70^{\circ}\text{C}$
- Compatible with other SloanLED 12 VDC products
- Three lit mitered corner configurations
- Convenient mounting clips
- Can be cut in the field
- UL, cUL recognized, CE Certified

Item Description	Part # Tube	Approx.. Cut Increments	Actual Length
2ft Tube	701800-color-2	2.4in (60mm)	24 1/2in (.6m)
4ft Tube	701800-color-4	2.4in (60mm)	48 1/2in (1.2m)
6ft Tube	701800-color-6	2.4in (60mm)	72 1/2in (1.8m)
8ft Tube	701800-color-8	2.4in (60mm)	96 1/2in (2.45m)

SPECIFICATIONS:

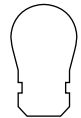
Power per foot (meter)	2.28 (7.5) Watts
Colors	Red, orange, yellow, green, blue, white

Uses SloanLED 12 Volt DC Power Supply



FlexiBRITE - Flexible LED tubing

Add that "neon look" to any LED-lit sign with the world's first completely flexible LED tubing. FlexiBRITE is field bendable making it easy to create an endless array of profiles, contours and patterns on the fly. Ideal for exterior and interior lighting applications such as sign perimeters, letters, symbols, accent stripes, borders and open-face channel letters.



Small profile

- Bright, wide viewing-angle LEDs offer intense, uniform glow for perimeter/accent lighting
- Operating temperature -40°C to $+70^{\circ}\text{C}$
- Compatible with other SloanLED 12 VDC products
- Prewired, completely sealed, waterproof tubes can be cut-to-fit, spliced and resealed
- Optically modified silicone extrusion: UV stable, hydrocarbon insensitive, non-fading
- Convenient mounting clips and mounting tracks
- UL, cUL recognized, CE Certified

Item Description	Part# Kit	Cut Increments
Red Kit	701499-R-Size	2.0in (50mm)
Orange Kit	701499-O-Size	2.0in (50mm)
Yellow Kit	701499-Y-Size	2.0in (50mm)
Green Kit	701499-G-Size	1.0in (25mm)
Blue Kit	701499-B-Size	1.0in (25mm)

SPECIFICATIONS:

Power per foot (meter)	2.8 (9.2) Watts
Packaging	2' or 10' (.6m or 3m) kits containing end-caps and mounting clips

Uses SloanLED 12 Volt DC Power Supply

SloanLED 12 Volt DC Power Supply

- Use with all ChanneLED, V Series, Great White 3, ThinLED, ColorLINE and FlexiBRITE products
- UL recognition for dry, damp and wet locations
- Simple primary hook-ups, Class 2 outputs
- Proven reliability
- Operating Temperatures -40° to +60° C
- Simple secondary hook-ups – no minimum load, no load balancing and no dip-switches
- Power supplies carry required UL, cUL and CSA certification



Modular 60 *The Expandable LED Power Supply*

Now one power supply can be carried and used regardless of your 12 Volt DC power needs. Offering the maximum allowed Class 2 output power, this unit features a modular design that can be used as a single 60 Watt unit, or clustered together with others via standard J-boxes to provide power output wattages of 120, 180, or 240. This innovative power supply is robust, flexible, weather resistant, easy to use and carries UL recognition for dry, damp and wet locations, CE and CSA certification. Now also available in a 277 volt version.



Item Description	Part # Number	Nominal Input Voltage	Input Current	Power Output	Enclosure Spec			Overall Dimensions
					Dry	Damp	Wet	
Self Contained 20	701680	120/240 Volts	0.3 Amps	20 Watts	X	X		4.75inL x 1.5 inW x 1inH 118mm x 35mm x 26mm
Modular 60	701507-MOD	120/240 Volt	1.0 Amps	60 Watts	X	X	X	9inL x 2.5inW x 1.5inH 229mm x64mm x 38mm
Modular 60-277	701507-MOD277	277-347 Volts	0.5 Amps	60 Watts	X	X	X	10.5inL x 2.5inW x 1.5inH 267mm x 64mm x 38mm
Quad 240 (4 legs)	701495	120-240 Volts	3.0 Amps	240 Watts	X	X	X	9.5inL x 5.9inW x 3.2inH 241mm x 150mm x 81mm

Power supplies carry required UL, cUL and CSA certification · Self contained 20 and Modular 60 also carry CE certification

Accessories

Dimmer Solutions

Now all SloanLED 12 Volt DC products can be dimmed using our dimming modules (PN 701817) and either our manual Dim Control Box (PN 701843) or approved automatic controller.

Installation Cable

SloanLED offers 18 gauge (PN 400299-1200) and 14 gauge (PN 400301-100) to make your installation easier.



24 Volt AC LEDStripe Transformer

PowerLED transformers are used to provide 24 Volt AC power to LEDStripe. They can be mounted to metal fascia, stucco, concrete, brick or any other surface that can be fastened to with conventional fasteners.

- Simple primary hook-ups, Class 2 outputs
- Simple secondary hookups - no minimum load, no load balancing and no dip switches
- Proven reliability
- UL recognized for dry and damp locations
- CE version available

Item Description	Part # Number	Nominal Input Voltage	Input Current	Power Output (#Legs)	Enclosure Spec		Overall Dimensions
					Dry	Damp	
LEDStripe 120V	700940	120V/ 60Hz	3.0 Amps	300 Watts (3)	X	X	8.75inL x 4.4inW x 4.1inH 222mm x 112mm x 104mm
LEDStripe 240V	700940-240	240V/ 50Hz	1.5 Amps	300 Watts (3)	X	X	9.5inL x 5.4inW x 5inH 241mm x 137mm x 127mm
LEDStripe 240V-CE	701847	240V/ 50Hz	4.5 Amps	200 Watts (2)	X	X	8.75inL x 5inW x 4.6inH 222mm x 127mm x 117 mm
LEDStripe 277V	700964	277V/ 60Hz	1.5 Amps	300 Watts (3)	X	X	8.75inL x 4.4inW x 4.1inH 222mm x 112mm x 104mm

LED Tubing Power Supply Capacity

12 VDC - FlexiBRITE and ColorLINE

Item Description	Part # (Each)	Power Output	FlexiBRITE		ColorLINE	
			All Colors Maximum # Feet (Meter)**	All Colors Maximum # Feet (Meter)**	All Colors Maximum # Feet (Meter)**	All Colors Maximum # Feet (Meter)**
Self Contained 20	701680	20 Watts	6 (1.8)	8 (2.5)		
Modular 60	701507-MOD	60 Watts	20 (6)	24 (7.3)		
Modular 60-277	701507-MOD277	60 Watts	20 (6)	24 (7.3)		
Quad 240*	701494	240 Watts	80 (24.4)	96 (29.2)		
Power Used per Foot (Meter) in Watts						
			2.8 (9.2)	2.3 (7.5)		

*Quad 240 has 4 output legs; footages expressed are total (divide by 4 for footage per leg)

24 VAC - LEDStripe

Item Description	Part # (Each)	Power Output (# Legs)		LEDStripe All Colors	
		Maximum # Feet (Meter)**			
LEDStripe 120V	700940	300 Watts (3)		90 (27.4)	
LEDStripe 240V	700940-240	300 Watts (3)		90 (27.4)	
LEDStripe 240V-CE	701847	200 Watts (2)		60 (18.3)	
LEDStripe 277V	700964	300 Watts (3)		90 (27.4)	
Power Used per Foot (Meter) in Watts					
		30' (9m) per leg)			2.8 (9.2)

** Transformers have 2 or 3 output legs; footages expressed are total, (maximum 30' (9m) per leg)

NOTE: When mixing various products on the same power supplies, simply add all the power requirements for the respective footages of each product. Then choose appropriate power supplies to provide adequate power output. The actual number of power supplies needed may vary based on how the materials are spread over the project.



www.SloanLED.com · info@SloanLED.com Toll-Free 888.747.4LED · 805.676.3200 Fax 805.676.3206

Some or all of the products shown are covered by US and foreign patents issued or pending. Specification may change without notice. © 2008 SloanLED

Sign LEDs Power Supply Capacity

Maximum Number of Feet (Meters) / Modules – All footage based on 90% of rated capacity

Item Description (Part #)	Power Output	CL5 - Red	CL5 - White, Warm White	V Series All 8 Colors	CL4 Mini - Red,	CL4 Mini - Green, Blue, White	CL4 Short - White (WSB)	CL4 Short - Red, Orange, Amber	CL4 - Short Green, Blue	CL4 Long - Red, Orange, Amber	Great White 3	ThinLED All Colors
Modules/Foot (Meter)		2 (6.6)	2 (6.6)	3 (9.8)	4 (13)	4 (13)	3 (9.8)	3 (9.8)	3 (10)	2 (6.6)	-	-
Self Contained 20 (701680)	20 Watts	15 (4.5) /30 Mods.	10 (3) /20 Mods.	10 (3) /30 Mods.	7.5 (2.3) /30 Mods.	13 (4) /52 Mods.	12 (3.7) /36 Mods.	10 (3) /30 Mods.	118 (5.5) /54 Mods.	15 (4.5) /30 Mods.	7.5 Mods.	8 (2.5)
Modular 60 (701507-MOD)	60 Watts	45 (14) /90 Mods.	30 (9) /60 Mods.	30 (9) /90 Mods.	22.5 (7) /90 Mods.	40 (12) /160 Mods.	37 (11.4) /112 Mods.	30 (9) /90 Mods.	54 (16.5) /162 Mods.	45 (14) /90 Mods.	22.5 Mods.	25 (7.6)
Modular 60-277 (701507-MOD277)	60 Watts	45 (14) /90 Mods.	30 (9) /60 Mods.	30 (9) /90 Mods.	22.5 (7) /90 Mods.	40 (12) /160 Mods.	37 (11.4) /112 Mods.	30 (9) /90 Mods.	54 (16.5) /162 Mods.	45 (14) /90 Mods.	22.5 Mods.	25 (7.6)
Quad 240* (701495)	240 Watts	180 (55) /360 Mods.	120 (37) /240 Mods.	120 (37) /360 Mods.	90 (27) /360 Mods.	160 (48) /640 Mods.	149 (45.4) /448 Mods.	120 (37) /360 Mods.	216 (66) /648 Mods.	180 (55) /360 Mods.	90 Mods.	100 (30.5)
Watts per Modules		.6	.9	.6	.6	.35	.48	.6	.35	.6	2.4	2.2 per strip

*Quad 240 has four output legs: footages expressed are total (divide by four for footage per leg)

NOTE: When mixing CL4 modules of different sizes/colors or various products on the same power supplies, simply add all the power requirements for the respective footages of each product. Then choose appropriate power supplies to provide adequate power output. The actual number of power supplies needed may vary based on how the materials are spread over the project.



www.SloanLED.com · info@SloanLED.com Toll-Free 888.747.4LED · 805.676.3200 Fax 805.676.3206

Some or all of the products shown are covered by US and foreign patents issued or pending. Specification may change without notice. © 2008 SloanLED

SloanLED is a bright choice for Eco-friendly lighting solutions



**Recycle
Reduce
Reuse
Retrofit**

- Significant energy cost savings
- Standardized low voltage systems
- Complies with the European Union RoHS directive 2002/95/EC, California's Proposition 65 demands and WEEE compliant
- Recycled/recyclable packaging materials
- Mercury and lead free illumination
- Simple retrofits
- For more informations go to www.SloanLED.com

Make sure your LED system has Constant Current Technology (CCT)

- CCT maintains consistent current levels, eliminating the line loss and voltage drop issues common in many LED lighting systems.
- CCT provides uniform light output throughout the entire installation, while also preventing damage from overdriving of the LEDs.
- CCT means no more complex wiring procedures, delicate load balancing, finicky power supply settings or lot-specific LED selection.

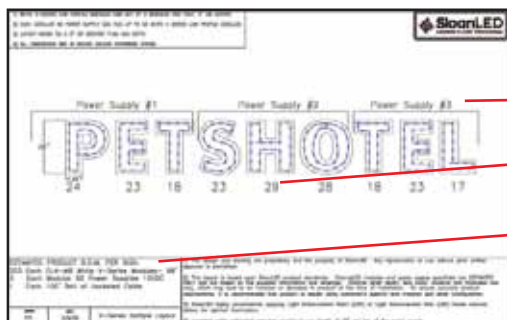


Warranty:

SloanLED products carry a limited warranty when used with SloanLED power supplies. Please see SloanLED warranty details at our web site.

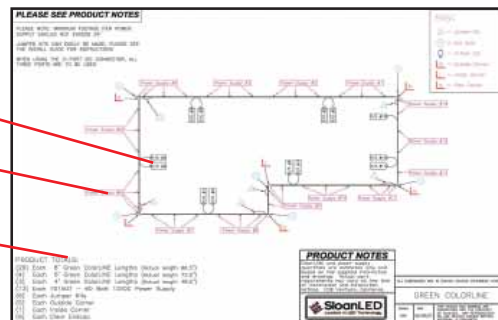
- Red, orange, amber, and yellow colors - 5 years
- Green, blue and white - 3 years
- ChanneLED white - 4 years
- Power Supplies - 5 years

Contact us today for your FREE estimate/layout



Each estimate includes:

- Power supplies needed
- Estimated product needed
- Bill of Material



Available at:



www.SloanLED.com • info@SloanLED.com

Some or all of the products shown are covered by US and foreign patents pending and covered by one or more of the following US patents issued: 6776504, 6969179, 7192157, 6932495, 7241031
Specification may change without notice.
© 2009 SloanLED #000700-CAT REV. L VP10

SloanLED Corporate Headquarters
Toll-Free 888.747.4LED · Tel 805.676.3200 · Fax 805.676.3206

SloanLED Europe
Tel +31 (15) 3641569 · Fax +31 (84) 2297252 · europe@SloanLED.com