

Wide Format Inkjet Printer

JV33 new **Series**
JV33-130 / JV33-160

Mimaki

Being beautiful is not enough.

High quality, high speed printing at an affordable price. The JV33 series.



Solvent ink

Aqueous ink

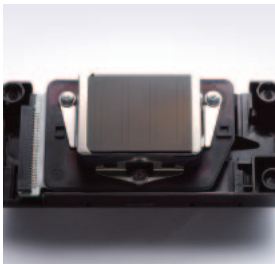
Evolution. JV33 Series

State-of-the art inkjet technology makes enhanced high quality / high speed performance a reality. Introducing an affordable, high performance, multifunction, solvent inkjet printer.

Overcoming the previously held misconceptions about solvent inkjet printers, the JV3 series has achieved enormous popularity ever since its release. Following in the footsteps of this revolutionary machine, the JV33 series was created. In addition to various enhancements which bring out a high quality print of 1,440 dpi, the new JV33 series has increased print speed. With it's compact design and affordable price, the JV33 series is an attractive option for any shop. Mimaki's flagship product has established high standards which set it apart from the competition.



Unique inkjet technology makes ultra-high resolution and high-speed printing possible



Compatible with high resolution and high speed Newly developed high-speed print head

A newly developed high-speed print head containing 180 nozzles x 8 lines, allows for ease of assembly and calibration. With it's increased print head accuracy the JV33 delivers truly high quality print of 1,440 dpi. In addition, the improved running efficiency has improved the print speed by 30% over the JV3 series. Print quality in 4-color bidirectional mode is also improved using a "symmetric ink arrangement".

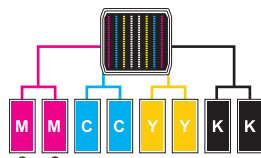
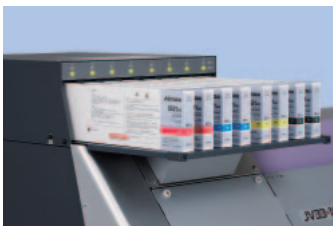
Print speed

Model		High speed mode	Standard mode	High quality mode
		540x720dpi 4pass Bi-directional	540x1,080dpi 6pass Bi-directional	720x1,440dpi 8pass Bi-directional
JV33-160	4 color	17.5	11.9	7.4
	6 color	9.0	6.1	3.4
JV33-130	4 color	16.7	11.4	7.1
	6 color	8.6	5.8	3.2

(unit:m²/hour)

USB2.0 Interface Supports high speed data transfer

The new UISS improves operating performance by allowing continuous unattended printing



In case of Magenta / A red light is displayed when a cartridge is out of ink the machine switches automatically to a new cartridge.

Automatic ink cartridge switching allows for longer print runs UISS (Uninterrupted Ink Supply System)

UISS for continuous printing is standard on JV3 machines. The JV33 can utilize two cartridges per color in 4-color mode. When the ink cartridge runs out, another cartridge begins supplying ink and helps prevent running out of ink. A maximum of 880cc ink per color can be loaded at one time. With 880cc of ink loaded at one time, a 50m (54yd) roll of media can be printed without interruption. Ink cartridges can be changed during printing.

*UISS can not be used in 6-color mode.

Creative inkjet technology and high quality ink provides ultra-high resolution printing

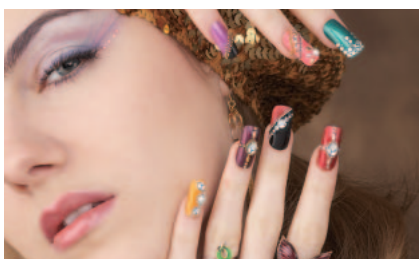


Image of variable dot

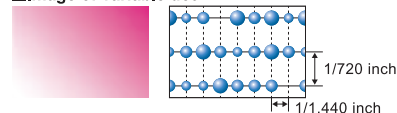
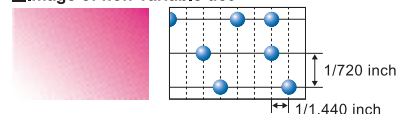


Image of non-variable dot

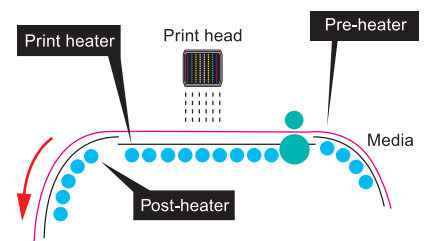


Create ultra-high resolution print Piezo inkjet system

Precise control of ink firing reproduces details of photo image at a maximum resolution of 1,440 dpi. Even edges of 4-point text are printed sharp and clear.

4-color mode realizes non-grainy finish Variable dot technology

By producing dots in three different sizes, smooth high resolution graphics are created without a grainy appearance. Even at high speed and in low resolution mode high quality printing is possible.



Ink performance is improved Triple stage intelligent heater





A triple stage intelligent heater automatically heats up the media to the appropriate temperature, thus improving the performance of ink. A newly mounted Post-heater quickens drying time and thus enables a fast take-up of the media.



A variety of inks, including white, enables you to create a wider range of graphics

Four types of ink are available to meet your needs, including aqueous inks

The two solvent inks feature high scratch resistance, high density, wide color gamut and high safety (Cyclohexanon-free). You may also select aqueous pigment ink or dye sublimation ink at the time of installation.

Solvent ink		Aqueous ink	
 <p>SS21 ink</p> <p>Fast drying ink provides the ability of printing on various types of media with high scratch resistance.</p>	 <p>ES3 ink</p> <p>Virtually odorless and user-friendly ink that does not require any special ventilation.</p>	 <p>Pigment ink</p> <p>Ink which has high light fastness and can reproduce vivid and delicate color tones.</p>	 <p>Dye sublimation ink</p> <p>Fast drying and high density ink for sublimation transfer to polyester substrates.</p>

Print simultaneously using full color and white ink (SS21)

Mimaki's exclusive "White ink Overlay print" * allows for simultaneous white and full color printing and realizes a beautiful finish with accurate overlay. Printing with white ink onto transparent or opaque substrates creates vivid full color graphics.

* As of July, 2007

6-color print

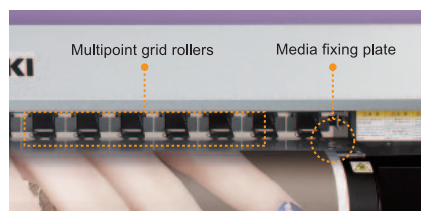


6-color + white ink print



White Ink

Additional features and benefits to improve operation performance



Provides stable media feed by use of a multi-point grid roller system

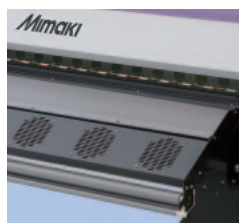
Securely holds media in place for more accurate and secure media feed. This works especially well for long prints.

Head height can be adjusted, assuring a constant quality image

Head height can be adjusted to either 2mm or 3mm according to the media thickness. For the aqueous ink model, height head adjustment of either 4mm or 5mm* is available.

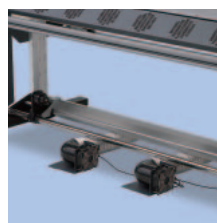
* adjustment by technician is required.

Drying speed is increased Automatic drying fan (option)



Drying speed can be improved with the use of a post-heater. The take-up reel can be used even when printing at high speed, improving efficiency and work flow.

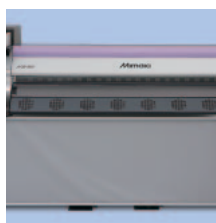
Comfortable, odor-less work environment Exhaust vents to help ventilating working spaces more effectively (option)



Exhaust fans



Exhaust ducts

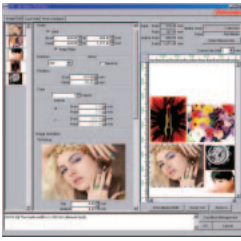


Exhaust curtain

Exhaust-fans attached to the front and exhaust-ducts on the back help removing fumes effectively. A curtain attached to the front of the machine reduces the spread of printing exhaust and help removing fumes effectively.

New generation output software with 16 bit rendering (a standard item)

High performance software RIP helps you utilize the various functions of the JV33 series.



- 16 bit rendering eliminates tone jump and produces fine color reproduction.
- Different images can be laid out freely on the RIP.
- Versatile editing functions such as tiling, trimming, scaling and rotating are provided.
- Able to network in environments where Windows and Macintosh co-exist.



[8 bit rendering]
Tone jump is likely to occur in gradation



[16 bit rendering]
Smooth gradation without tone jump

RasterLink Pro III

■ Specifications

Item	Specifications		
	JV33-130	JV33-160	
Head	On-demand Piezo head (180nozzles x 8 lines)x1 head		
Maximum print width	1,361mm (53.5")	1,610mm (63.3")	
Printing resolution	540, 720, 1,440dpi		
Printing mode (scan x feed)	540 x 720dpi, 540 x 900dpi, 540 x 1,080dpi		
	720 x 540dpi, 720 x 720dpi, 720 x 1,080dpi, 720 x 1,440dpi		
	1,440 x 1,440dpi		
Ink	Kind	Exclusive Solvent ink: ES3 ink, SS21 ink	
		Exclusive aqueous pigment ink	
		Exclusive dye sublimation ink	
Capacity	4-color mode:440cc cartridge x 2/color, 880cc/color		
	6-color mode:440cc cartridge x 1/color, 440cc/color		
Media	Size	1,371mm (53.9")	1,620mm (63.9")
	Roll weight	Less than 25kg (55.1lbs.)	
	Print surface	Face out	
	Roll inside diameter	2 inch or 3 inch	
Media cutting	Cutting on Y direction by cutter at the head		
Media heater	Triple stage intelligent heater (Pre/Print/Post)		
Media Take-up device	Roll take-up device (standard), inside/outside selectable		
Interface	USB2.0		
Applicable standards	VCCI Class A, FCC Class A, UL 60950		
	CE Marking (EMC directive, Low voltage directive) . CB report		
Power	AC100 ~ 120V±10%, AC220 ~ 240V±10%、 50/60Hz±1Hz		
Power consumption	Less than 1,440 VA		
Operation environments	Usable temperature:20°C ~ 35°C (64~95°F), Humidity:35~65%RH (No condensation)		
Dimensions (W x D x H)	2,289 x 739 x 1,424mm (90.1" x 29.1" x 56.1")	2,538 x 739 x 1,424mm (99.9" x 29.1" x 56.1")	
Weight	145kg (320lbs.)	160kg (353lbs.)	

■ Supplies

Item		Item No
SS21 Solvent ink	440cc	SPC-0501Y·M·C·K·Lm·Lc
	220cc	SPC-0504W
ES3 Eco solvent ink	440cc	SPC-0440Y·M·C·K·Lm·Lc
Aqueous pigment ink	220cc	SPC-0494Y·M·C·K·Lm·Lc
Dye sublimation ink 51	440cc	SPC-0493K·BL·M·Y·LBL·LM
Wiper kit	10 pcs	SPA-0134
Waste ink bottle 2L	1 pc	SPA-0117
Cutter blade assembly	1 pc	SPA-0107
MS cleaning cartridge (SS21 and ES3 ink)	220cc	SPC-0294
Head cleaning cartridge (Pigment and dye sublimation ink)	220cc	SPC-0188S

■ Option

Item		Item No
Drying and exhaust unit 130	JV33-130	OPT-J0129
Drying and exhaust unit 130	JV33-160	OPT-J0130

JV33-160

Standard items: Take-up device, RasterLinkPro III

Maximum
printing width
1,610mm

JV33-130

Standard items: Take-up device, RasterLinkPro III

Maximum
printing width
1,361mm

- Some of the samples in this catalogue are artificial renderings.
- Specifications, design and dimensions stated in this catalogue may be subject to change without notice (for technical improvements, etc).
- The corporate names and merchandise names written on this catalogue are the trademark or registered trademark of the respective corporations.
- Inkjet printers print using extremely fine dots, so colors may vary slightly after replacement of the printing heads. Also note that if using multiple printer units, colors could vary slightly from one unit to other unit due to slight individual differences.

MIMAKI ENGINEERING CO., LTD.

TKB Gotenyama Bldg. 5-9-41 Kitashinagawa Shinagawa,
Tokyo 141-0001, Japan Tel: +81-3-5420-8671
trading@mimaki.co.jp www.mimaki.co.jp

MIMAKI USA, INC.

140 Satellite Boulevard NE, Suwanee, Georgia 30024-7128
Atlanta +1-888-530-3988 Boston +1-888-530-3986
Los Angeles +1-888-530-3987 Chicago +1-888-530-3985
www.mimakiusa.com

MIMAKI EUROPE B.V.

Joan Muyskenweg 42-44, 1099CK
Amsterdam, The Netherlands
Tel: +31-20-4627-640
www.mimakieurope.com